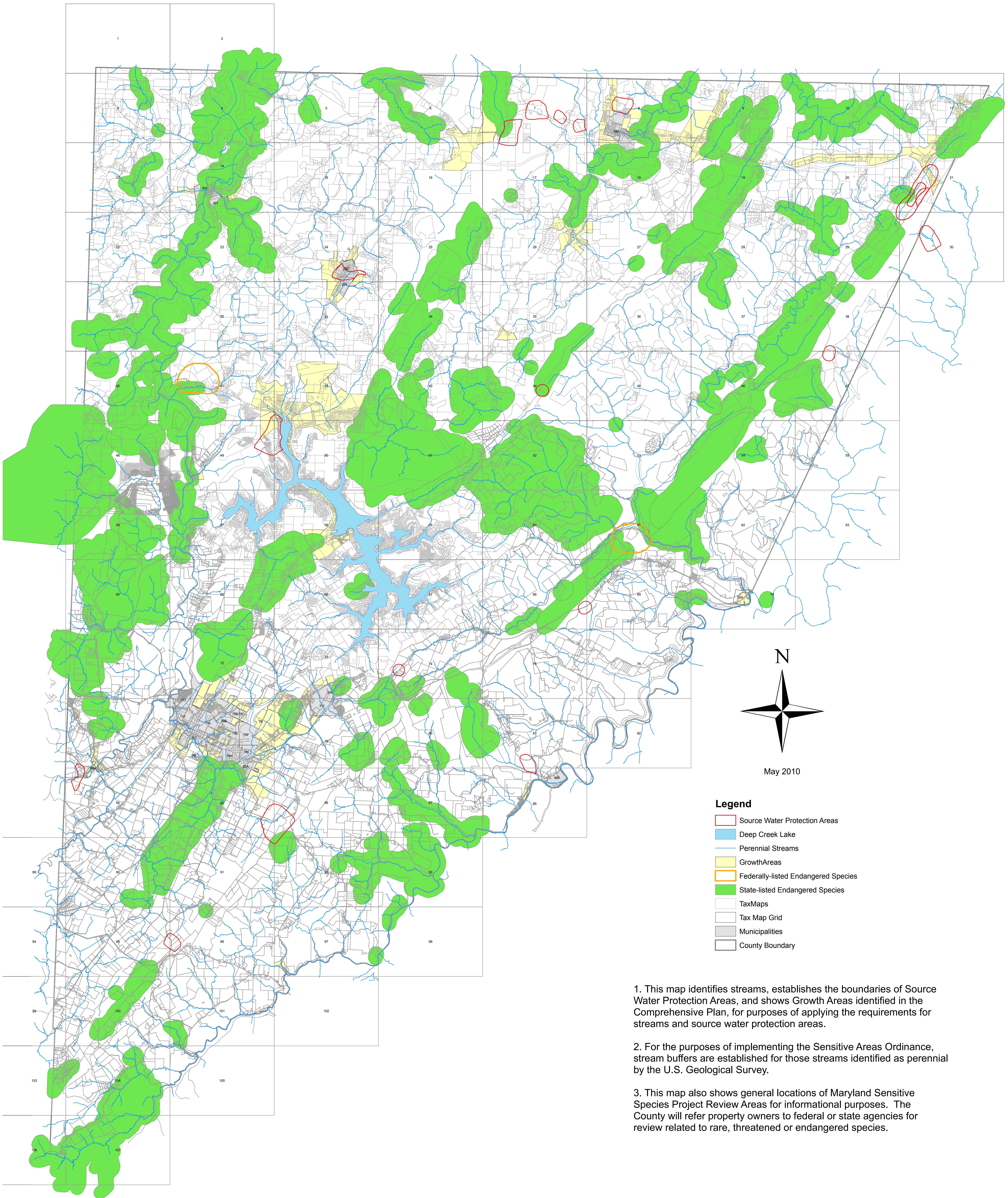


# Sensitive Areas; Map 1

## Streams, Growth Areas, Habitats for State & Federal Endangered Species and Source Water Protection Areas



1. This map identifies streams, establishes the boundaries of Source Water Protection Areas, and shows Growth Areas identified in the Comprehensive Plan, for purposes of applying the requirements for streams and source water protection areas.
2. For the purposes of implementing the Sensitive Areas Ordinance, stream buffers are established for those streams identified as perennial by the U.S. Geological Survey.
3. This map also shows general locations of Maryland Sensitive Species Project Review Areas for informational purposes. The County will refer property owners to federal or state agencies for review related to rare, threatened or endangered species.